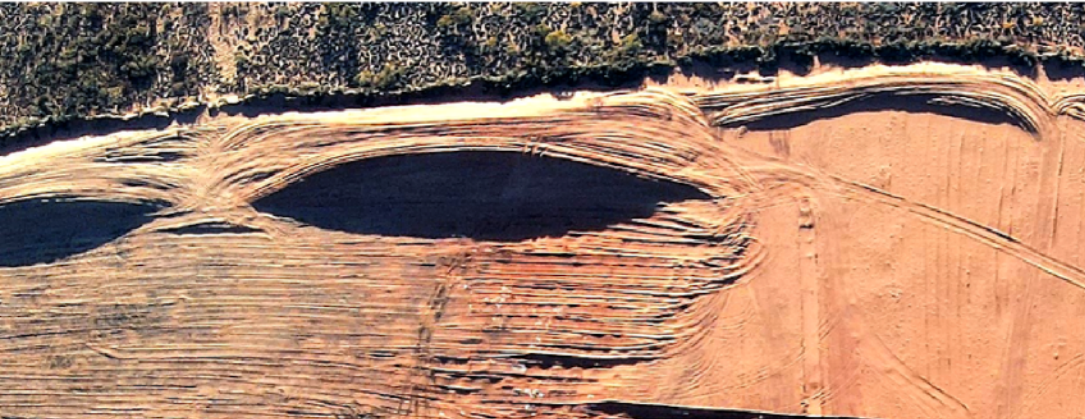


Civil Engineering



WML has experience across the Structural, Civil, Pavements, Subdivisions & Geotechnical disciplines which allows us to provide a fully integrated project approach. We draw on local knowledge and expertise to consistently deliver quality outcomes over various industries from residential and multi-storey commercial developments to infrastructure and mining.

Highway and Road Design

Urban Traffic Design

Landfill Facilities

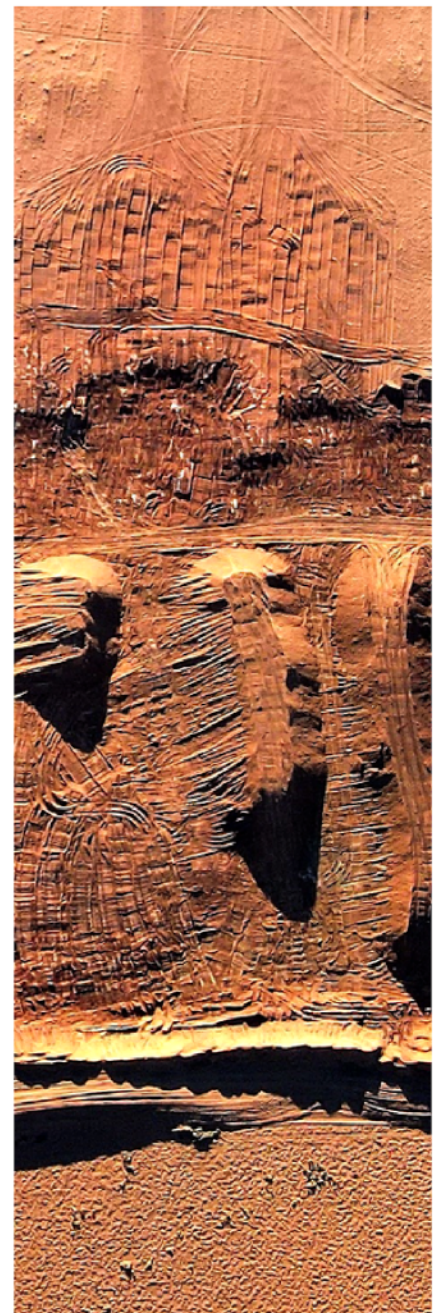
Bulk Earthworks Design

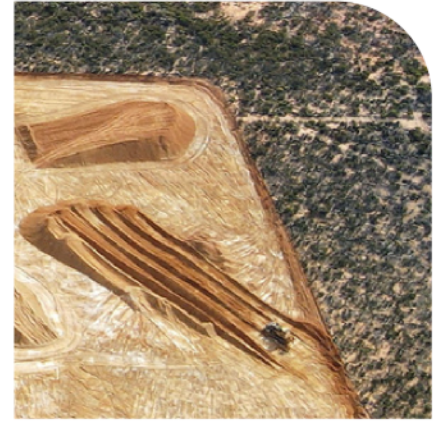
Superintendence and Administration

Water and Wastewater Systems Design

Flood Restoration Projects

And More





At WML, our Civil Department provides a full service from Scope of Work Development through Preliminary and Detail Design to Project Delivery. This includes:

Rural and Urban Highways for Main Roads WA

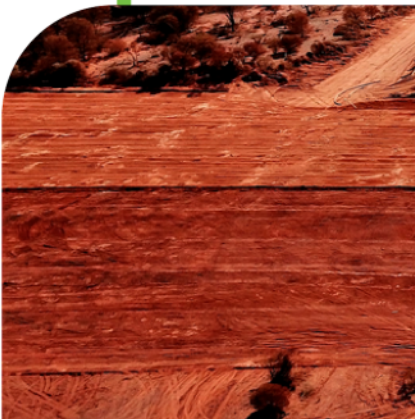
Secondary Roads, Streets, and Intersections for Local Government and the Resources Sector

Water and Wastewater Reticulation for Individuals, Land Developers and Water Service Providers

Subsoil and stormwater drainage, detention basins, and WSUD for Local and State Government, Resources Sector and Developers

Landfill and Residue Storage design for Local Government, the Resources Sector and Landfill Operators

Collaboration with Sub-Consultants in the Lighting and Electrical, Survey, Services Location, Traffic Analysis, Arboricultural and other areas to provide a One-Stop shop service.



Civil Engineering



Highway and Road Design

From private access roads to major highways, our Civil Group puts clients on the map. We design all road classifications including local streets and traffic calming, unsealed haul roads and major highways, complex intersections and on- and off-ramps. The work almost always requires catchment and waterways analysis and drainage design (surface and subsurface). The work often requires electrical and lighting design, services location and engineering feature survey, which is delivered through our extensive sub-consultant network.

We specialise in development and resources infrastructure requiring connection to Main Roads WA managed roads and have a lot of experience in providing solutions with related Water Corporation infrastructure when encountered on a project.

We have been an active member on the MRWA Engineering Technical Services Panel for the past 25 years.

Subdivision and Land Development

We offer total subdivision and development solutions including planning and permitting assistance, regulatory compliance, and overall drainage and reticulation designs for new and expanding communities. Our extensive sub-consultant network is utilised to provide planning, licensed surveying, electrical, communications and environmental services. Our design team has been instrumental in delivering some of the largest subdivisions to be found in the South West Region of WA.



Civil Engineering



Bulk Earthworks Design

Our Civil Group focuses on earthworks solutions that maximise the use of site-won materials while minimising waste and impact on the surrounding environment. This optimisation is achieved by combining our designs with the input from our Geotechnical Group, thus providing a holistic solution to our clients.

Water and Wastewater Systems Design

We provide a range of watertight solutions, including water and wastewater reticulation and infrastructure design and documentation. Our experience range across planning, pressure and storage design, pump station design and much more. We are active members on the Water Corporation Regional Panel and the Busselton Water Engineering Services Panel.

Landfill Facilities

Our expertise spans the landfill life cycles from master plan design through to capping and rehabilitation. You can rely on our solid track record on providing practical, cost-effective facilities to the resource and landfill operator sectors.

Superintendence and Administration

WML has experience with the majority of industry-standard contract formats and can help ease project stress by providing expert superintendence and contract administration services as part of our design scopes of work.

