



# Asset Inspection & Assessment



## Argyle Diamond Mine | Rio Tinto

Rio Tinto has relied on WML to conduct structural audits for the Argyle Diamond Mine process plant and supporting structures since 2011. Since then we have completed extensive inspections, followed by detailed reporting and priority scales for recommended works.



# Helping protect your assets

- Inspections, surveys and integrity assessment
- Design verification
- Condition monitoring
- Fitness for service assessment
- Structural analysis
- Failure analysis

## Maintenance: Less costly than rebuilding

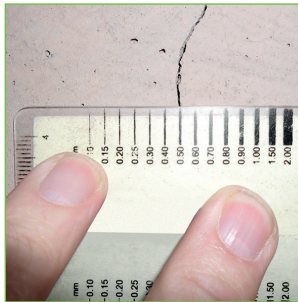
Rust never sleeps, but you can rest easily after our Structural Group assesses your facilities and infrastructure. Our inspections are complemented by detailed analysis and reporting to provide actionable insights for current and future planning.

## Make the most of down time

Targeted advice based on our analysis helps clients maximise plant shut-downs with prioritised recommendations for maintenance and rehabilitation works.



Bald Hill Tantalite Mine | Alliance Minerals



Concrete inspection & cracking assessment

## Civil structures of every description

From bridges to tunnels, flood defense structures to retaining walls, our team can assess, analyse and provide advice on integrity, remaining service life and staged maintenance and rehabilitation. Our expertise covers the full breadth of modern and traditional construction materials: steel, reinforced concrete, timber, aluminium and composites.



## Condition Assessments of Pedestrian Bridges

WML's structural team provided asset inspection services to 12 pedestrian bridges located with the City of Bunbury. An overall condition rating was provided and recommendations for maintenance.



## Boddington Bauxite Mine Primary Crusher Structural Assessment

WML is an integral part of South32's Asset Management team working to maximise asset utilisation and reduce risk.



## Old Nannup Railway Bridge Structural Investigation and Load Rating

WML were required to undertake a condition assessment of the support trestles of the Old Nannup Bridge.

**BUNBURY**  
(08) 9722 3544  
PO Box 2023  
Bunbury WA 6231  
First Floor  
62 Wittenoom Street  
Bunbury WA 6230

**KALGOORLIE**  
(08) 9021 1811  
PO Box 10309  
Kalgoorlie WA 6433  
Suite 1  
45 Brookman Street  
Kalgoorlie WA 6430

**PERTH**  
(08) 9722 3566  
Level 3  
1 Prowse Street  
West Perth WA 6005

**wml.com.au**  
wml@wml.com.au



**WML**  
Consulting Engineers

| ISO 9001 | ISO 14001 | ISO 45001 |