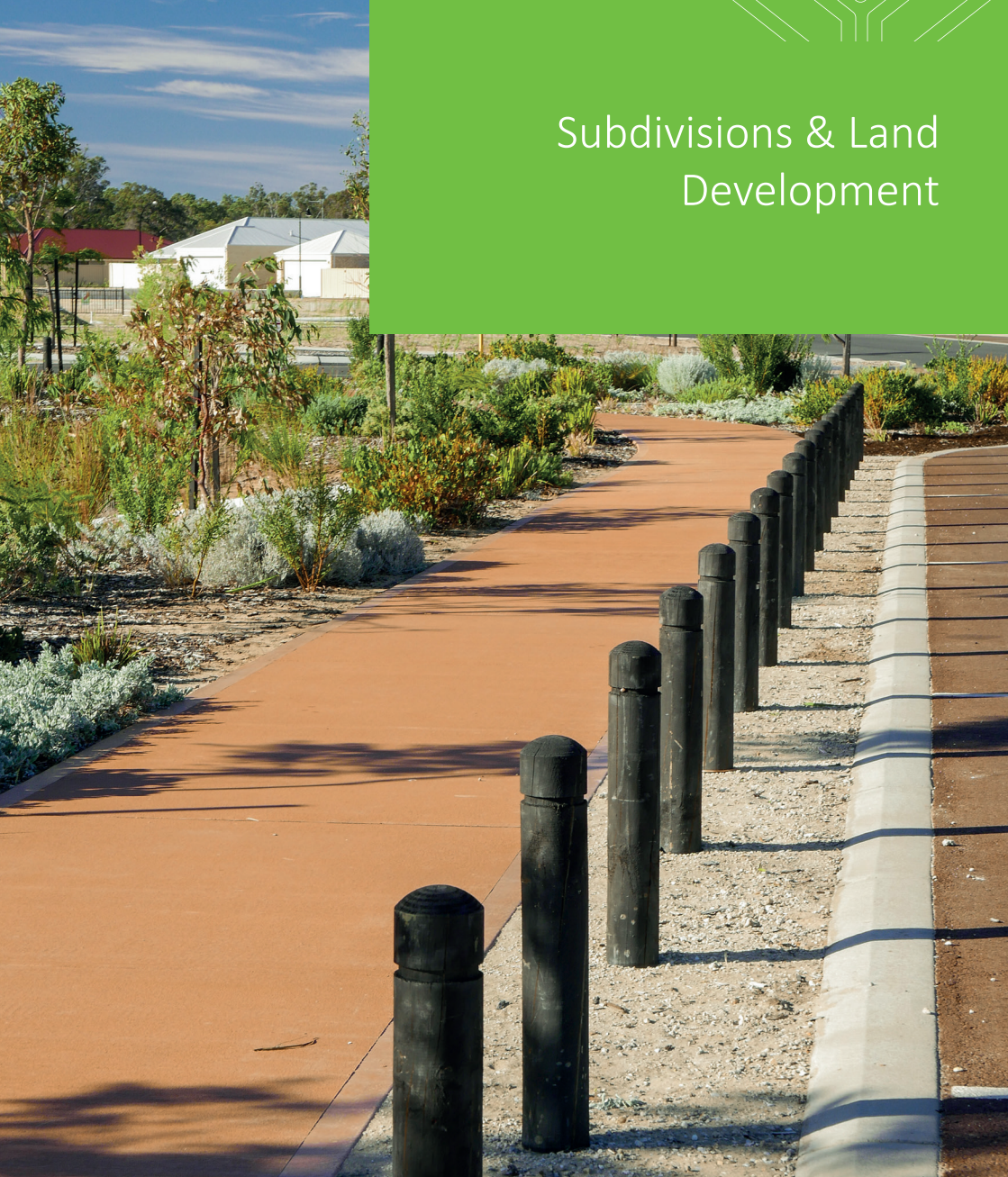




# Subdivisions & Land Development



## Skilled land development guidance

Whether your project is rural or urban, commercial, residential or industrial, you can rely on WML's expertise at every major milestone.



# Simplifying the subdivision process

WML provides end-to-end consultation for large and small subdivisions and other land development projects. Our team is well versed in state and local land use requirements and will guide you smoothly through the Western Australian Planning Commission (WAPC) application process.

## Planning Phase

- Consultation with stakeholders and authorities
- Concept analysis
- Preliminary layout
- Infrastructure and geotechnical investigations including soils analysis, acid sulphate soil (ASS) investigations, and dewatering and ASS management plans

## Design Phase

- Determine stakeholder standards and specifications
- Implement staged development process
- Issue construction drawings and documentation

## Tender Phase

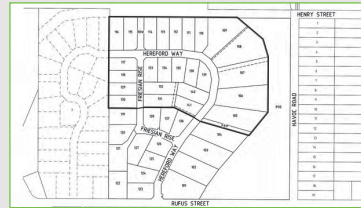
- Prepare call for tenders
- Provide any necessary clarifications to tenderers
- Perform tender adjudication
- Issue contract documentation

## Construction Phase Superintendency

- Superintendency services
- Provide contract administration services
- Facilitate site meetings
- Attend progress inspections
- Coordinate sign-offs for releases and issuance of title

## Defects Liability Phase

- Monitor performance of completed works
- Attend final inspection



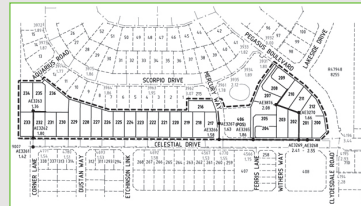
### Moss Ridge Estate Stage 2

For this 25-lot stage, WML designed earthworks, roadwork, intersections, driveways and footpaths; established water connections for all lots and coordinated with City of Albany, Water Corporation and landowners.



### Bussell Highway, Witchcliffe

Ahola Planning engaged WML to determine groundwater and soil conditions; perform preliminary ASS investigation and effluent capability study; provide groundwater well installation and monitoring and prepare pavement design parameters.



### Pegasus Boulevard, McKail

For this 35-lot residential subdivision WML provided design and documentation for earthworks; roadworks; stormwater reticulation; sewer and water connection verification and provision of connections for unserviced lots; consultation with Water Corporation, City of Albany, land owners and other stakeholders.

**BUNBURY**  
(08) 9722 3544

PO Box 2023  
Bunbury WA 6231  
First Floor  
62 Wittenoom Street  
Bunbury WA 6230

**KALGOORLIE**  
(08) 9021 1811

PO Box 10309  
Kalgoorlie WA 6433  
Suite 1  
45 Brookman Street  
Kalgoorlie WA 6430

**PERTH**  
(08) 9722 3566

Level 3  
1 Prowse Street  
West Perth WA 6005

**wml.com.au**  
wml@wml.com.au



**WML**  
CONSULTING ENGINEERS

| ISO 45001 | ISO 9001 | ISO 14001 |